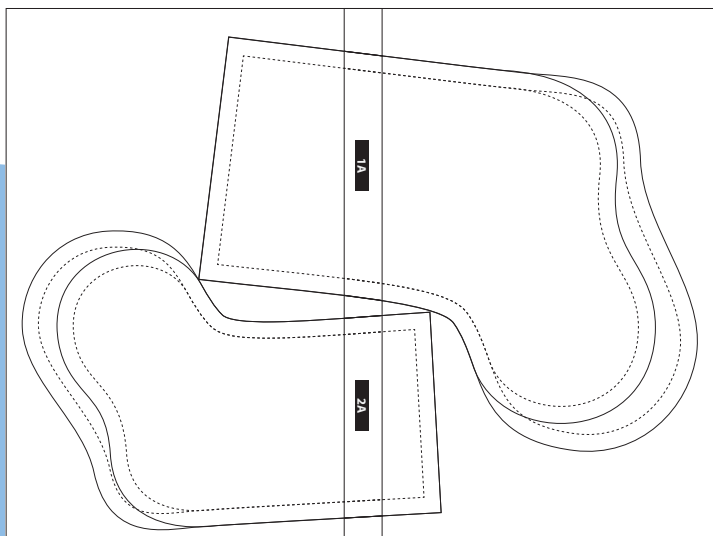
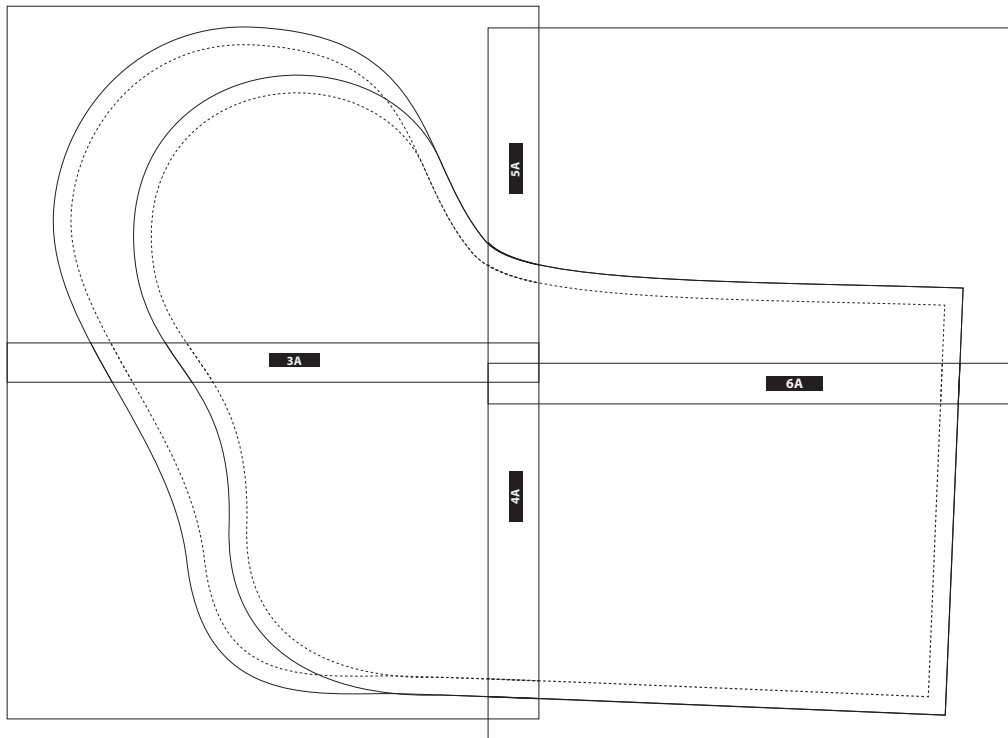




On the following pages you will find the pattern for a Christmas stocking in three different sizes and two variants.

Place the printed pages with the correct markings (from 1A to 6A) on top of each other and tape them together as shown below.

Important: Print all pages in its original size! The check box should be 3cm x 3cm in size.



1A

**Medium Christmas Stocking - Part 1**  
Size: 26 cm

Variant B  
Variant A

2A

**Small Christmas Stocking - Part 1**  
Size: 20 cm

2A

**Small Christmas Stocking - Part 2**  
Size: 20 cm

Variant B  
Variant A

**Medium Christmas Stocking - Part 2**  
Size: 26 cm

1A

5A

**Large Christmas Stocking - Part 1**  
Size: 60 cm

3A

Variant B

Variant A

**Large Christmas Stocking - Part 2**

Size: 60 cm

**Variant B**

**Variant A**

5A

**Large Christmas Stocking - Part 3**  
Size: 60 cm

6A

6A

**Large Christmas Stocking - Part 4**

Size: 60 cm

4A